

ZS small orifice

ZS S2 small orifice

ZS

ZS S2

ZSF S2

How to Order?

Series No.	Port size	Original status	Orifice	ID Code	Voltage	Valve body material	Seal material	Thread type
ZS: Thread connection ZSF: Flange connection	06: 1/8" 25: 1" 08: 1/4" 32: 1-1/4" 10: 3/8" 40: 1-1/2" 15: 1/2" 50: 2" 20: 3/4"	Blank: NC H: NO	025: 2.5mm 200: 20mm 030: 3mm 250: 25mm 040: 4mm 350: 35mm 050: 5mm 400: 40mm 060: 6mm 500: 50mm 075: 7.5mm 650: 65mm 100: 10mm 800: 80mm 160: 16mm 1000: 100mm (Note: cancel if same with port size)	Blank: Standard type N: Low power type	E1: AC110V E2: AC220V E3: AC380V E4: DC24V E5: DC12V E6: AC36V E7: AC24V E8: DC110V E9: DC48V E10: DC36V	Blank: Brass S1: SS316 S2: SS304	Blank: NBR E: EPDM V: VITON Si: Silicon smaller than Φ25mm is optional	Blank: G P: PT T: NPT

Order Example:

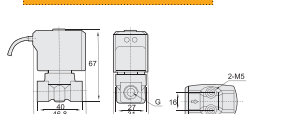
ZS series solenoid valve, 1/2" port size, NC, 16mm orifice, standard type, AC110V, Brass valve body, NBR seal, G thread, ERP code is: ZS15-160E1  
Note: 2.5mm small orifice valve only with flying leads coil, other orifice with DIN connector coil.

Product Features

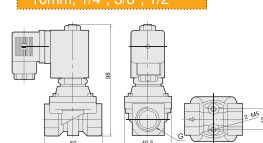
- \* Normal close/Normal open, available body: brass, SS304, SS316
- \* Multiple seals are available for different medium
- \* To reduce the power consumption of 80% energy-saving
- \* Wide size range from 1/8" to 2", with both thread and flange connection
- \* Diaphragm pilot solenoid valve, with lower working pressure (10mm is special)

Main Dimensions

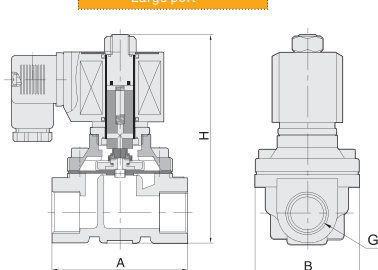
Φ2.5mm 1/8" 1/4"



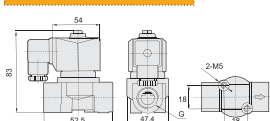
10mm, 1/4", 3/8", 1/2"



Large port

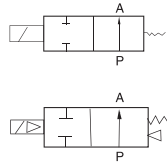


Φ4mm 3/8"



Specifications

Port size (G)	Orifice (mm)	CV value	Min. pressure	Pressure difference ( Bar )						Max. working temperature (°C)	Power		Model 220VAC		Main dimension
				Max. working pressure				Light oil <20CST			VA	W	Brass	Stainless steel 304	Length x Width x Height A x B x H (mm)
				AC	DC	AC	DC	AC	DC		AC 220	DC 24V			
1/8"	2.5	0.23	0	7	5	7	5	7	5	80	13	8.5	ZS06-025E2	ZS06-025E2S2	46.8 x81 x67
	2.5	0.23	0	7	5	7	5	-	-	120	13	8.5	ZS06-025E2E	ZS06-025E2S2E	46.8 x81 x67
	2.5	0.23	0	7	5	7	5	7	5	120	13	8.5	ZS06-025E2V	ZS06-025E2S2V	46.8 x81 x67
1/4"	2.5	0.23	0	7	5	7	5	7	5	80	13	8.5	ZS08-025E2	ZS08-025E2S2	46.8 x81 x67
	2.5	0.23	0	7	5	7	5	-	-	120	13	8.5	ZS08-025E2E	ZS08-025E2S2E	46.8 x81 x67
	2.5	0.23	0	7	5	7	5	7	5	120	13	8.5	ZS08-025E2V	ZS08-025E2S2V	46.8 x81 x67
	10	1	0	20	16	20	16	20	16	80	22	13	-	-	50 x40.5 x88
	10	1	0	20	16	20	16	-	-	120	22	13	ZS08-100E2	-	50 x40.5 x88
3/8"	4	0.6	0	8	5	8	5	5	5	80	33	20	ZS10-040E2	ZS10-040E2S2	52.5 x7.5 x83
	4	0.6	0	8	5	8	5	-	-	120	33	20	ZS10-040E2E	ZS10-040E2S2E	52.5 x7.5 x83
	4	0.6	0	8	5	8	5	5	5	120	33	20	ZS10-040E2V	ZS10-040E2S2V	52.5 x7.5 x83
	10	1.8	0	20	16	20	16	20	16	80	22	13	ZS10E2	-	50 x40.5 x83
	10	1.8	0	20	16	20	16	-	-	120	22	13	ZS10E2E	-	50 x40.5 x83
1/2"	10	1.8	0	20	16	20	16	20	16	120	22	13	ZS10E2V	-	50 x40.5 x83
	16	4.8	0	10	6	10	6	7	4	80	33	20	ZS15-160E2	ZS15-160E2S2	69 x75 x106
	16	4.8	0	10	6	10	6	-	-	120	33	20	ZS15-160E2E	ZS15-160E2S2E	69 x75 x106
	16	4.8	0	10	6	10	6	7	4	120	33	20	ZS15-160E2V	ZS15-160E2S2V	69 x75 x106
	16	4.8	0	10	6	10	6	7	4	120	33	20	ZS15-160E2	-	69 x75 x106
3/4"	20	7.6	0	10	6	10	6	7	4	80	33	20	ZS20E2	ZS20E2S2	73 x7 x114
	20	7.6	0	10	6	10	6	-	-	130	33	20	ZS20E2E	ZS20E2S2E	73 x7 x114
	20	7.6	0	10	6	10	6	7	4	120	33	20	ZS20E2V	ZS20E2S2V	73 x7 x114
1"	25	12	0	10	6	10	6	7	4	80	33	20	ZS25E2	ZS25E2S2	99 x77 x121
	25	12	0	10	6	10	6	-	-	120	33	20	ZS25E2E	ZS25E2S2E	99 x77 x121
	25	12	0	10	6	10	6	7	4	120	33	20	ZS25E2V	ZS25E2S2V	99 x77 x121
	25	12	0	10	6	3	3	3	3	120	33	20	ZS25E2G	ZS25E2S2G	99 x77 x121
1-1/4"	35	24	0	10	6	10	6	7	4	80	70	40	ZS32-350E2	ZS32-350E2S2	112 x86.5 x150
	35	24	0	10	6	10	6	-	-	120	70	40	ZS32-350E2E	ZS32-350E2S2E	112 x86.5 x150
	35	24	0	10	6	10	6	7	4	120	70	40	ZS32-350E2V	ZS32-350E2S2V	112 x86.5 x150
1-1/2"	40	29	0	10	6	10	6	7	4	80	70	40	ZS40E2	ZS40E2S2	123 x84 x160
	40	29	0	10	6	10	6	-	-	120	70	40	ZS40E2E	ZS40E2S2E	123 x84 x160
	40	29	0	10	6	10	6	7	7	120	70	40	ZS40E2V	ZS40E2S2V	123 x84 x160
	50	48	0	10	6	10	6	7	4	80	70	40	ZS50E2	ZS50E2S2	168 x123 x183
2"	50	48	0	10	6	10	6	-	-	120	70	40	ZS50E2E	ZS50E2S2E	168 x123 x183
	50	48	0	10	6	10	6	7	4	120	70	40	ZS50E2V	ZS50E2S2V	168 x123 x183
	50	48	0	10	6	10	6	7	4	80	70	40	-	-	140 x115 x160
	25	12	0	10	6	10	6	-	-	130	70	40	-	-	140 x115 x160
Flange 4 hole	25	12	0	10	6	10	6	7	4	80	70	40	-	-	140 x115 x160
	25	12	0	10	6	10	6	7	4	120	70	40	-	-	140 x115 x160
	32	24	0	10	6	10	6	7	4	80	70	40	-	-	152 x135 x215
	32	24	0	10	6	10	6	-	-	130	70	40	-	-	152 x135 x215
	32	24	0	10	6	10	6	7	4	120	70	40	-	-	152 x135 x215
	40	29	0	10	6	10	6	7	4	80	70	40	-	-	152 x135 x215
	40	29	0	10	6	10	6	-	-	130	70	40	-	-	152 x135 x215
	40	29	0	10	6	10	6	7	4	120	70	40	-	-	152 x135 x215
	50	48	0	10	6	10	6	7	4	80	70	40	-	-	195 x160 x220
	50	48	0	10	6	10	6	-	-	130	70	40	-	-	195 x160 x220
	50	48	0	10	6	10	6	7	4	120	70	40	-	-	195 x160 x220
	65	75	0	6	5	6	5	3	2	80	55	64	-	-	250 x185 x308
	65	75	0	6	5	6	5	3	2	120	55	64	-	-	250 x185 x308
	65	75	0	6	5	6	5	3	2	120	55	64	-	-	250 x185 x308
	80	90	0	6	5	6	5	3	2	80	55	64	-	-	270 x202 x320
	80	90	0	6	5	6	5	3	2	120	55	64	-	-	270 x202 x320
	80	90	0	6	5	6	5	3	2	120	55	64	-	-	270 x202 x320
	100	160	0	6	5	6	5	3	2	80	55	64	-	-	342 x222 x345
	100	160	0	6	5	6	5	3	2	120	55	64	-	-	342 x222 x345
	100	160	0	6	5	6	5	3	2	120	55	64	-	-	342 x222 x345



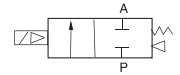
ZS-10H



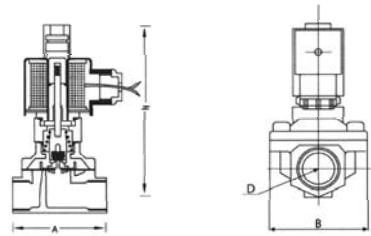
ZS-15HS2



ESP 15



Main Dimensions



Product Features

- 2/2 ways Solenoid valve, Normally open. Copper and stainless steel 304 valve selection
- Multiple seals are available for different medium
- Wide size range from 3/8" to 2", with both thread and flange connection
- Diaphragm pilot solenoid valve, with lower working pressure
- To reduce the power consumption of 80% energy-saving

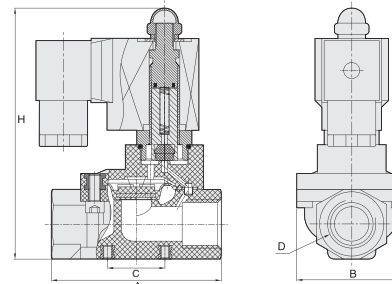
Port size	Orifices (mm)	CV value	Pressure difference ( Bar )								The maximum temperature of fluid (°C)	ZSH			Model 220VAC 50/60HZ		Main dimension Length x Width x Height A x B x H(mm)
			Max. working pressure									VA AC220	W DC24V	W DC24V	Brass	Stainless steel 304	
			Air, Gas		Water, Hot water, Liquid		Light oil ≤20cSt		AC	DC							
3/8"	4.0	0.6	0	5	3	5	3	3	3	80	33	20	4	ZS10H-040E2	ZS10H-040E2S2	52.5 x 32.5 x 115	
	4.0	0.6	0	5	3	5	3	3	3	120	33	20	4	ZS10H-040E2V	ZS10H-040E2S2V	52.5 x 32.5 x 115	
	16	4.8	0	5	3	3	5	3	3	80	33	20	4	ZS10H-160E2	ZS10H-160E2S2	69 x 57 x 135	
1/2"	16	4.8	0	5	3	3	5	3	3	120	33	20	4	ZS10H-160E2V	ZS10H-160E2S2V	69 x 57 x 135	
	16	4.8	0	5	3	5	3	3	3	80	33	20	4	ZS15H-160E2	ZS15H-160E2S2	69 x 57 x 135	
	16	4.8	0	5	3	5	3	3	3	120	33	20	4	ZS15H-160E2V	ZS15H-160E2S2V	69 x 57 x 135	
3/4"	20	7.6	0	5	3	5	3	3	3	80	33	20	4	ZS20HE2	ZS20HE2S2	73 x 57 x 142	
	20	7.6	0	5	3	5	3	3	3	120	33	20	4	ZS20HE2V	ZS20HE2S2V	73 x 57 x 142	
	25	12	0	5	3	5	3	3	3	80	33	20	4	ZS25HE2	ZS25HE2S2	99 x 77.5 x 150	
1"	25	12	0	5	3	5	3	3	3	120	33	20	4	ZS25HE2V	ZS25HE2S2V	99 x 77.5 x 150	
	32	24	0	5	3	5	3	3	3	70	55	-	-	ZS32HE2	ZS32HE2S2	112 x 86.5 x 180	
	32	24	0	5	3	5	3	3	3	120	70	55	-	ZS32HE2V	ZS32HE2S2V	112 x 86.5 x 180	
1-1/4"	40	29	0	5	3	5	3	3	3	80	70	55	-	ZS40HE2	ZS40HE2S2	123 x 94 x 190	
	40	29	0	5	3	5	3	3	3	120	70	55	-	ZS40HE2V	ZS40HE2S2V	123 x 94 x 190	
	50	48	0	5	3	5	3	3	3	80	70	55	-	ZS50HE2	ZS50HE2S2	168 x 123 x 216	
2"	50	48	0	5	3	5	3	3	3	120	70	55	-	ZS50HE2V	ZS50HE2S2V	168 x 123 x 216	
	25	12	0	5	3	5	3	3	3	80	57	32	6	-	ZSF25HE2S2	140 x 115 x 180	
	25	12	0	5	3	5	3	3	3	120	57	32	6	-	ZSF25HE2S2V	140 x 115 x 180	
Flange 4 hole	32	24	0	5	3	5	3	3	3	80	70	55	-	-	ZSF32HE2S2	152 x 135 x 235	
	32	24	0	5	3	5	3	3	3	120	70	55	-	-	ZSF32HE2S2V	152 x 135 x 235	
	32	24	0	5	3	5	3	3	3	120	70	55	-	-	ZSF32HE2S2V	152 x 135 x 235	
	40	29	0	5	3	5	3	3	3	80	70	55	-	-	ZSF40HE2S2	152 x 145 x 240	
	40	29	0	5	3	5	3	3	3	120	70	55	-	-	ZSF40HE2S2V	152 x 145 x 240	
	40	29	0	5	3	5	3	3	3	120	70	55	-	-	ZSF40HE2S2V	152 x 145 x 240	
50	48	0	5	3	5	3	3	3	3	80	70	55	-	-	ZSF50HE2S2	195 x 160 x 255	
	50	48	0	5	3	5	3	3	3	120	70	55	-	-	ZSF50HE2S2V	195 x 160 x 255	
	50	48	0	5	3	5	3	3	3	120	70	55	-	-	ZSF50HE2S2V	195 x 160 x 255	

How to Order?

Series No.	Port size	ID Code	Voltage	Thread type
ESP	10: 3/8" * 15: 1/2" * 20: 3/4" * 25: 1" * 32: 1-1/4" * 40: 1-1/2" *	Blank: Standard type N: Low power type	E1: AC110V E2: AC220V E3: AC380V E4: DC24V E5: DC12V	E6: AC36V E7: AC24V E8: DC110V E9: DC48V E10: DC36V

**Order Example:**  
ESP series solenoid valve, 3/8 port size, standard type, AC110V, PT thread, ERP code is: ESP10E1-P

Main Dimensions



Product Features

- Normal close, reinforced nylon body, lower cost
- Sizes range from 3/8" to 1-1/2"
- Diaphragm pilot solenoid valve, with lower working pressure
- To reduce the power consumption of 80% energy-saving

Model	Length(A)	Width(B)	C	Height(H)	Port size (D)
ESP10	74	48	25	109	3/8"
ESP15	74	48	25	109	1/2"
ESP20	104	90	38	128	3/4"
ESP25	104	90	38	128	1"
ESP32	133	120	60	152	1-1/4"
ESP40	133	120	60	152	1-1/2"

Specifications

Model	ESP10	ESP15	ESP20	ESP25	ESP32	ESP40
Working medium	Air, Gas, Water, Liquid					
Acting type	Pilot acting type					
Orifice(mm)	15	15	25	25	40	40
Port size	3/8"	1/2"	3/4"	1"	1-1/4"	1-1/2"
Working pressure(Bar)	0.5-7					
Guaranteed pressure(Bar)	9					
Working temperature(°C)	0-65					
Valve body material	Reinforced Nylon					
Seal material	NBR					