



**ROCHESTER
GAUGES, INC.**

ISO 9001:2008 CERTIFIED

Bimetal Industrial Thermometers

Application

These 5" [125 mm] thermometers are used extensively in oil and chemical processing plants and have been adopted as standard in the food, paper and textile and power industries as well because of their ability to withstand rough treatment and difficult environments.

Materials Of Construction*

Case, Stem, Bezel & Nut

Type 304 stainless steel case

Dial

Aluminum

Sensing Element

Bimetallic

Lens

Glass (Acrylic or tempered glass available at extra cost)

General Specifications*

These thermometers are available with or without a recal feature - please specify your needs. A ½" NPT threaded connection is standard. For greatest accuracy, the stem should be inserted at least 2" into liquids and 4" into gases. Prescribed accuracy is 1% of scale range. Each thermometer is hermetically sealed and dampened.

* Materials and specifications are subject to change without notice.
Pressure ratings subject to change due to temperature and other environmental considerations.

How To Order

B = Bottom mounted

G = Glass lens

15 = 5" size

50 = ½" NPT threaded connection

- = Hyphen

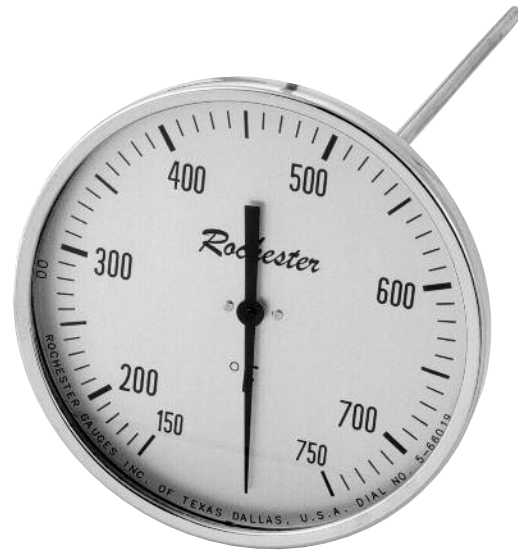
0 = No special feature

R = Recal feature

11 = 0° to 500°F temperature range

06 = 6" stem length

Example: RG1550-R1106



Available Temperature Ranges

Fahrenheit	
01	-150° to 50°
03	-50° to 120°
06	-40° to 160°
08†	0° to 100°
10	0° to 300°
11	0° to 500°
12	0° to 800°
13†	25° to 125°
14	30° to 240°
16	50° to 350°
17	50° to 400°
19	150° to 750°
21	200° to 1000°
24	0° to 220°
25	-70° to 150°
49	0° to 250°

Centigrade	
30	-10° to 110°
31†	0° to 50°
32	0° to 150°
33	0° to 200°
34	0° to 300°
56	100° to 540°

Dual-Scale	
40	-70° to 50°C -90° to 130°F
43	0° to 300°C 40° to 570°F
68	10° to 150°C 50° to 300°F

Other ranges and scales may be available if justified by quantity.

†08, 13, & 31; 2 ½" stem length is not available.

01/20/10



Order Number Description

X	X	X	X	X	X	—	X	X	X	X
Case Style	Lens Material	Dial Size	Bushing		Special Features		Temperature Ranges		Stem Length	

Example: RG1350-R1712 translates to:

- R** = Rear Mounting
G = Glass lens
13 = 3" dial
50 = ½" NPT connection
R = With recalibration feature
17 = 50° to 400°F temperature range
12 = 12" stem

Case Styles

- R** = Rear Mounting
B = Bottom Mounting
A = Any Angle (5" recal only)

Lens Materials

- G** = Glass (not available for 4" max/min)
P = Acrylic
T = Tempered Glass
 (not available in 1" or 2" dial sizes)

Dial Sizes

11 = 1"	12 = 2"	13 = 3"	14 = 4"	15 = 5"
----------------	----------------	----------------	----------------	----------------

Bushing

- 00** = Unthreaded (1" & 2" dial sizes only)
50 = ½" NPT
37 = ⅜" NPT (special orders only)
25 = ¼" NPT
 (2" dial size only & special orders only)

Special Features

- 0** = None
R = With recalibration (2", 3", & 5" dial sizes only)
M = Max/min indicating pointer (4" size only)

Stem Lengths

25 = 2 ½"	04 = 4"	05 = 5 ½"	06 = 6"
------------------	----------------	------------------	----------------

09 = 9"	12 = 12"	15 = 15"	18 = 18"	24 = 24"
----------------	-----------------	-----------------	-----------------	-----------------

NOTE: Other ranges, scales, stem lengths, dial colors, and features are available by special order if quantities justify. Call your Rochester Gauges representative or call us directly for information regarding the availability and cost of special orders.

Temperature Ranges

(See series for available ranges)

- 01** = -150° to 50°F (3" & 5" dials only)
03 = -50° to 120°F (excluding 1" & 4" dials)
06 = -40° to 160°F (1" & 5" dials only)
08 = 0° to 100°F (excluding 1",
 4" max./min. dials, 4" min. stem length)
10 = 0° to 300°F (excluding 1" dials)
11 = 0° to 500°F (excluding 1" dials)
12 = 0° to 800°F (excluding 1" dials &
 4" max./min. dials)
13 = 25° to 125°F (4" min. stem length,
 excluding 4" max./min. dials)
14 = 30° to 240°F
16 = 50° to 350°F (excluding 1" & 4" dials)
17 = 50° to 400°F (excluding 1" dial)
19 = 150° to 750°F (excluding RG1250 & 3" dials)
21 = 200° to 1000°F (excluding 1" dial)
24 = 0° to 220°F (excluding 4" dial)
25 = -70° to 150°F (excluding 1" dial)
49 = 0° to 250°F (excluding 1" dial)

- 28** = -50° to 50°C (excluding 1" & 4" dials)
30 = -10° to 110°C (excluding 1" dial)
31 = 0° to 50°C (excluding 1" &
 4" dials, 4" min. stem length)
32 = 0° to 150°C (excluding 4" dial)
33 = 0° to 200°C (excluding 1" &
 4" dials without max./min.)
34 = 0° to 300°C (excluding 1" & 4" dials)
35 = 0° to 400°C (excluding 1" dial)
48 = 0° to 250°C (1" dial only)
56 = 100° to 540°C (excluding 1", 2", & 4" dials)
64 = 0° to 120°C (4" dial only)

Dual Scale Temperature Ranges

- 40** = -70° to 50°C (excluding 1" & 4" dials)
 -90° to 130°F
43 = 0° to 300°C (excluding 1" & 4" dials)
 40° to 570°F
68 = 10° to 150°C (excluding 1", 2", & 4" dials)
 50° to 300°F