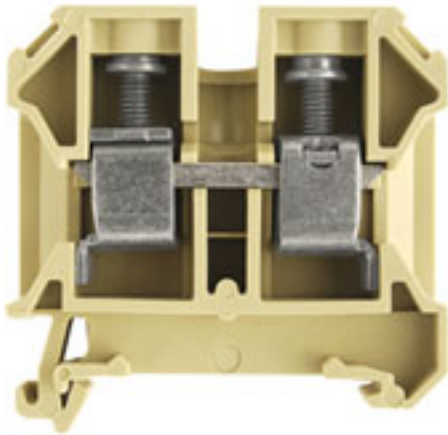


SAK Series
SAK 16/35 PA**Weidmüller Interface GmbH & Co. KG**
Klingenbergstraße 16
D-32758 Detmold
Germany
Fon: +49 5231 14-0
Fax: +49 5231 14-292083
www.weidmueller.com**Klippon® Connect with clamping yoke Technology**

The high reliability and variety of designs of the terminal blocks with clamping yoke connections make planning easier and optimises operational safety. Klippon® Connect provides a proven response to a range of different requirements.

General ordering data

Type	SAK 16/35 PA
Order No.	0380660000
Version	SAK Series, Feed-through terminal, Rated cross-section: 16 mm ² , Screw connection, Beige
GTIN (EAN)	4008190118204
Qty.	50 pc(s).

SAK Series
SAK 16/35 PA

Weidmüller Interface GmbH & Co. KG
 Klingenbergstraße 16
 D-32758 Detmold
 Germany
 Fon: +49 5231 14-0
 Fax: +49 5231 14-292083
 www.weidmueller.com

Technical data**Dimensions and weights**

Width	12 mm	Width (inches)	0.472 inch
Height	50 mm	Height (inches)	1.969 inch
Depth	57.5 mm	Depth (inches)	2.264 inch
Net weight	26.28 g		

Temperatures

Continuous operating temp., min.	-50 °C	Continuous operating temp., max.	100 °C
----------------------------------	--------	----------------------------------	--------

Material data

Material	PA 66	Colour	beige / yellow
UL 94 flammability rating	V-2		

Rating data IECEx/ATEX

Certificate No. (ATEX)	KEMA97ATEX1798U	Certificate No. (IECEX)	IECEXKEM06.0014U
Max. voltage (ATEX)	690 V	Current (ATEX)	66 A
Wire cross section max. (ATEX)	16 mm ²	Max. voltage (IECEX)	690 V
Current (IECEX)	66 A	Wire cross section max. (IECEX)	16 mm ²
Operating temperature range	For operating temperature range see EC Design Test Certificate / IEC Ex-Certificate of Conformity	Marking EN 60079-7	Ex e II
Ex 2014/34/EU label	II 2 G D		

System specifications

Version	Screw connection, for screwable cross-connection, One end without connector	Tightening torque (clamping screw for copper conductors)	2...2.4 Nm
End cover plate required	Yes	Number of potentials	1
Number of levels	1	No. of clamping points per level	2
Number of potentials per tier	1	Levels cross-connected internally	No
PE connection	No	Mounting rail	TS 35
N-function	No	PE function	No
PEN function	No		

Additional technical data

Explosion-tested version	No	Number of similar terminals	1
Open sides	right	Type of mounting	Snap-on

CSA rating data

Certificate No. (CSA)	154685-1501714	Current size C (CSA)	87 A
Voltage size C (CSA)	600 V	Wire cross section max. (CSA)	4 AWG
Wire cross section min. (CSA)	14 AWG		

Conductors for clamping (additional connection)

Conductor cross-section, flexible plus plastic collar DIN 46228/1, further connection, max. 16 mm²

SAK Series SAK 16/35 PA

Weidmüller Interface GmbH & Co. KG
 Klingenbergstraße 16
 D-32758 Detmold
 Germany
 Fon: +49 5231 14-0
 Fax: +49 5231 14-292083
 www.weidmueller.com

Technical data

Conductors for clamping (rated connection)

Blade size	1.0 x 5.5 mm	Clamping range, rated connection, max.	16 mm ²
Clamping range, rated connection, min.	2.5 mm ²	Clamping screw	M 4
Connection direction	on side	Cross-section for connected conductor, finely stranded with wire-end ferrules and plastic collars DIN 46228/4, rated connection, min.	4 mm ²
Gauge to IEC 60947-1	B6	Number of connections	2
Stripping length	15 mm	Tightening torque, max.	2.4 Nm
Tightening torque, min.	2 Nm	Torque level with DMS electric screwdriver	4
Twin wire-end ferrules, max.	10 mm ²	Twin wire-end ferrules, min.	1.5 mm ²
Type of connection	Screw connection	Wire connection cross section AWG, max.	AWG 6
Wire connection cross section AWG, min.	AWG 12	Wire connection cross section, finely stranded with wire-end ferrules DIN 46228/1, rated connection, max.	16 mm ²
Wire connection cross section, finely stranded with wire-end ferrules DIN 46228/1, rated connection, min.	4 mm ²	Wire connection cross section, finely stranded, max.	16 mm ²
Wire connection cross section, solid core max. rated connection	16 mm ²	Wire connection cross section, solid core, min. rated connection	2.5 mm ²
Wire connection cross section, stranded, rated connection, max.	16 mm ²	Wire connection cross section, stranded, rated connection, min.	4 mm ²
Wire connection cross-section, finely stranded with wire-end ferrules and plastic collars DIN 46228/4, rated connection, max.	16 mm ²	Wire connection cross-section, finely stranded, min.	4 mm ²

Rating data

Rated cross-section	16 mm ²	Rated voltage	1,000 V
Rated current	76 A	Current at maximum wires	76 A
Standards	IEC 60947-7-1	Volume resistance according to IEC 60947-7-x	0.42 mΩ
Rated impulse withstand voltage	8 kV	Pollution severity	3

UL rating data

Certificate No. (UR)	E60693	Conductor size Factory wiring max. (UR)	4 AWG
Conductor size Factory wiring min. (UR)	12 AWG	Conductor size Field wiring max. (UR)	4 AWG
Conductor size Field wiring min. (UR)	12 AWG	Current size C (UR)	80 A
Voltage size C (UR)	600 V		

Classifications

ETIM 3.0	EC000897	ETIM 4.0	EC000897
ETIM 5.0	EC000897	ETIM 6.0	EC000897
UNSPSC	30-21-18-11	eClass 5.1	27-14-11-20
eClass 6.2	27-14-11-20	eClass 7.1	27-14-11-20
eClass 8.1	27-14-11-20	eClass 9.0	27-14-11-20
eClass 9.1	27-14-11-20		

Product information

Descriptive text ordering data	If QIs are aligned side by side, then a TW/AP must be used.
Descriptive text technical data	Twin wire end ferrules ZH 2.5 - ZH 16 can be used.

Creation date January 12, 2018 6:39:42 PM CET

Data sheet**SAK Series
SAK 16/35 PA**

Weidmüller Interface GmbH & Co. KG
Klingenbergstraße 16
D-32758 Detmold
Germany
Fon: +49 5231 14-0
Fax: +49 5231 14-292083
www.weidmueller.com

Technical data**Approvals**

Approvals



ROHS Conform

Downloads

Approval/Certificate/Document of Conformity	CFAT_SAK_16.pdf DE_PT1301_20160414_023_ISSUE01.pdf
Engineering Data	EPLAN, WSCAD
User Documentation	Cross Connection Guide

Safety noteSafety notice [Safety Information](#)