

Instrument Valves



Instrument Valves

More Than Just Pressure Gauges and Thermometers

Winters valves allow for the isolation of process instrumentation facilitating quick replacement without shutting down the process. These valves are available in carbon steel or stainless steel (NACE or non-NACE) for high pressure applications (up to 10,000 psi), brass or lead free brass for low pressure (up to 400 psi) applications.



NVA Needle Valve (Straight Body, Hard Seat)

The one-piece body construction provides strength and safety while the slow opening handle prevents sudden pressure surge. The hard seat provides durability against high flow/velocity and corrosive media.

Body	Carbon steel, carbon steel NACE tip, stainless steel or stainless steel NACE
Connections	1/4", 3/8", 1/2", 3/4" or 1" NPTM x NPTF or NPTF x NPTF
Pressure	6,000 psi (41,368 kPa) or 10,000 psi (68,947 kPa)
Needle/Needle Tip	Stainless steel or stainless steel NACE
Gland Packing	Teflon®/Graphite (Graphite used for high temperature applications)
Warranty	1 year



NVA Needle Valve (Angle Body, Hard Seat)

The one-piece body construction provides strength and safety while the slow opening handle prevents sudden pressure surge. The hard seat provides durability against high flow/velocity and corrosive media.

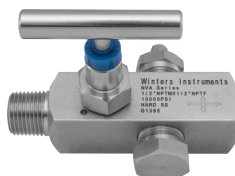
Body	Stainless steel or stainless steel NACE
Connections	1/4", 3/8", 1/2", 3/4" or 1" NPTM x NPTF or NPTF x NPTF
Pressure	6,000 psi (41,368 kPa) or 10,000 psi (68,947 kPa)
Needle/Needle Tip	Stainless steel or stainless steel NACE
Gland Packing	Teflon®/Graphite (Graphite used for high temperature applications)
Warranty	1 year



NVA Needle Valve (Straight Body, Soft Seat)

The one-piece body construction provides strength and safety while the slow opening handle prevents sudden pressure surge. The soft seat provides a tight seal against non-corrosive media.

Body	Carbon steel or stainless steel
Connections	1/4", 3/8", 1/2", 3/4" or 1" NPTM x NPTF or NPTF x NPTF
Pressure	6,000 psi (41,368 kPa)
Needle/Needle Tip	Stainless steel
Stem O-ring	FKM
Warranty	1 year



NVA Needle Valve (Multiport)

The multiport design allows for up to 3 instrument connections, reducing the number of connections to permanent piping installations, decreasing possible leak paths. **Bleed screw and plugs not included.**

Body	Carbon steel, stainless steel or stainless steel NACE
Connections	1/2" or 3/4" NPTM x NPTF
Pressure	6,000 psi (41,368 kPa) (soft seat) or 10,000 psi (68,947 kPa) (hard seat)
Needle/Needle Tip	Stainless steel or stainless steel NACE
Stem O-ring	FKM
Warranty	1 year



BBV Block & Bleed Valve Single Handle

The block & bleed design allows media to be bled off without disturbing the permanent piping installation, allowing safe and easy removal or replacement of instruments.

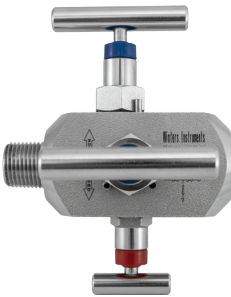
Body	Carbon steel or stainless steel
Connections	1/4" or 1/2" NPTM x NPTF or NPTF x NPTF
Pressure	6,000 psi (41,368 kPa) (soft seat) or 10,000 psi (68,947 kPa) (hard seat)
Needle/Needle Tip	Stainless steel
Stem O-ring	FKM
Warranty	1 year



BBV Block & Bleed Valve Two Handles

The two handle block & bleed valve allows controlled media bleed off without disturbing the permanent piping installation, allowing safe and easy removal or replacement of instruments.

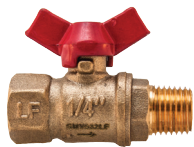
Body	Carbon steel, stainless steel or stainless steel NACE
Connections	1/4" or 1/2" NPTM x NPTF or NPTF x NPTF
Pressure	6,000 psi (41,368 kPa) (soft seat) or 10,000 psi (68,947 kPa) (hard seat)
Needle/Needle Tip	Stainless steel or stainless steel NACE
Stem O-rings	FKM
Warranty	1 year



BBV Double Block & Bleed Valve

The Double Block & Bleed Valve offers redundant closure for critical applications and controlled media bleed off, enabling instruments to be removed without disturbing the permanent piping installation.

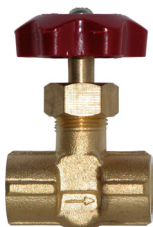
Body	Stainless steel or stainless steel NACE
Connections	1/4" or 1/2" NPTM x NPTF or NPTF x NPTF
Pressure	10,000 psi (68,947 kPa)
Needle/Needle Tip	Stainless steel or stainless steel NACE
Stem O-rings	FKM
Warranty	1 year



SMV/SMV-LF Mini Ball Valve/Lead Free Mini Ball Valve

An economical isolation ball valve for pressure gauges and transmitters. The ball valves provide flow control for any non-corrosive applications. A lead free version is available for use on potable water.

Body	#59-1 forged brass or lead free forged brass
Connections	1/4" NPTM x NPTF or NPTF x NPTF
Pressure	400 psi (2,758 kPa)
Gaskets	Teflon®
Ball	Stainless steel
Warranty	1 year



SNV/SNV-LF Needle Valve/Lead Free Needle Valve

An economical isolation needle valve for pressure gauges and transmitters. Provides precision flow control for any non-corrosive applications. A lead free version is available for use on potable water.

Body	#59-1 forged brass or lead free forged brass
Connections	1/4" NPTF x NPTF
Pressure	400 psi (2,758 kPa)
O-ring	Rubber
Shaft	#59-1 brass or lead free brass
Warranty	1 year

Teflon® is a registered trademark of DuPont Corporation

WINTERS INSTRUMENTS

Tel: 1-800-WINTERS / www.winters.com

WINTERS INSTRUMENTS

MANUFACTURER OF INDUSTRIAL INSTRUMENTATION



Winters Instruments is a global manufacturer of premium quality pressure and temperature instrumentation, with distribution partners in over 90 countries. Please contact us for your nearest Regional Manager.

Corporate - Canada

Winters Instruments
121 Railside Road
Toronto, Ontario
M3A 1B2
Tel: 416-444-2345
1-800-WINTERS
Fax: 416-444-8979
sales@winters.com

Canada - Calgary

Winters Instruments
3125-16 Street NE
Calgary, Alberta
T2E 7K8
Tel: 403-723-6645
1-800-WINTERS
Fax: 403-723-6647
calgary@winters.com

USA - Buffalo

Winters Instruments
600 Ensminger Road
Buffalo, New York
14150
Tel: 716-874-8700
1-800-WINTERS
Fax: 716-874-8800
usasales@winters.com

USA - Houston

Winters Instruments
5400 W. Sam Houston Parkway N.
Houston, Texas
77041
Tel: 281-880-8607
1-800-WINTERS
Fax: 281-880-8614
usasales@winters.com

Asia - Shanghai

Winters Instruments
Shanghai WitHub Hi-Tech
Business Center Suite 308
No. 333 Hongqiao Road
Shanghai 200030 China
Tel: 86-21-6104-2610
Fax: 86-21-6104-2615
asiasales@winters.com
www.wintersasia.com

Asia - Beijing

Winters Instruments
Rm. 1403, No. 36
Longbao Building, Maizidian Street
Chaoyang District
Beijing 100125 China
Tel: 86-10-8773-1315
Fax: 86-10-8773-1315
asiasales@winters.com
www.wintersasia.com

Latin America

Winters Instruments
Albarelos 1916 1° Piso E1
B1640BIN, Martinez
Buenos Aires, Argentina
Tel: 54-11-4733-3003
Fax: 54-11-4733-0572
latinsales@winters.com
www.winters.com.ar

Middle East - North Africa

Winters Instruments
6WBB G50
Dubai Airport Free Zone
Dubai, United Arab Emirates
Tel: 971-4295-9177
Fax: 971-4295-9177
menasales@winters.com



Distributed by: